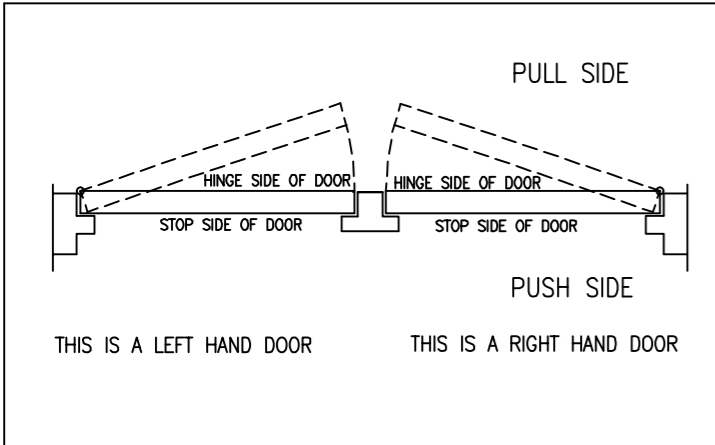
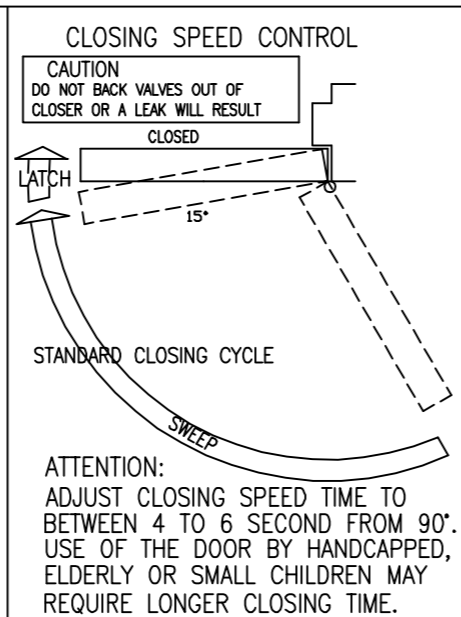
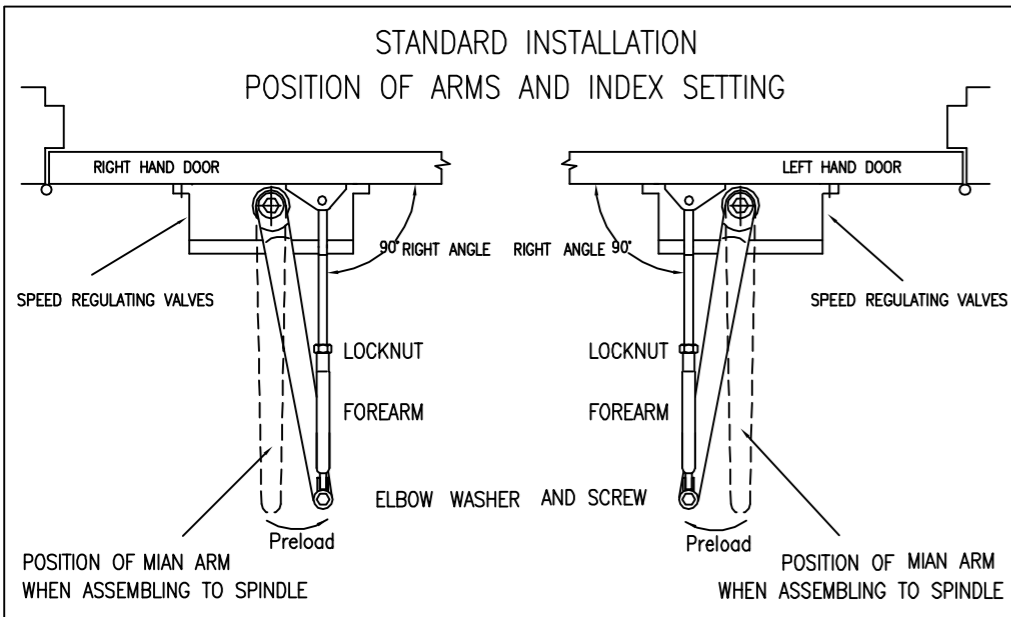
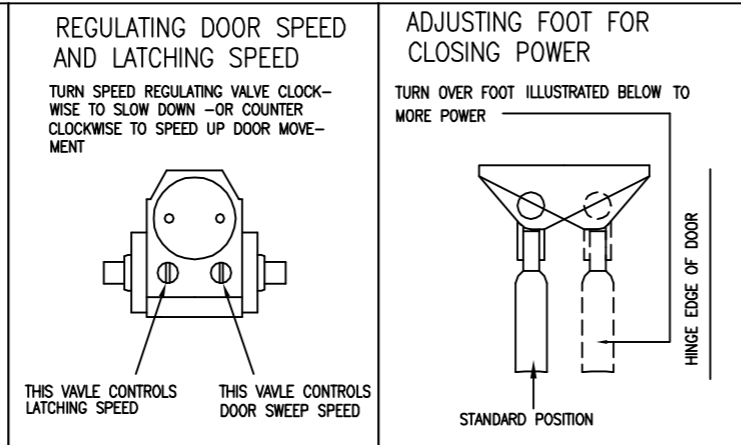


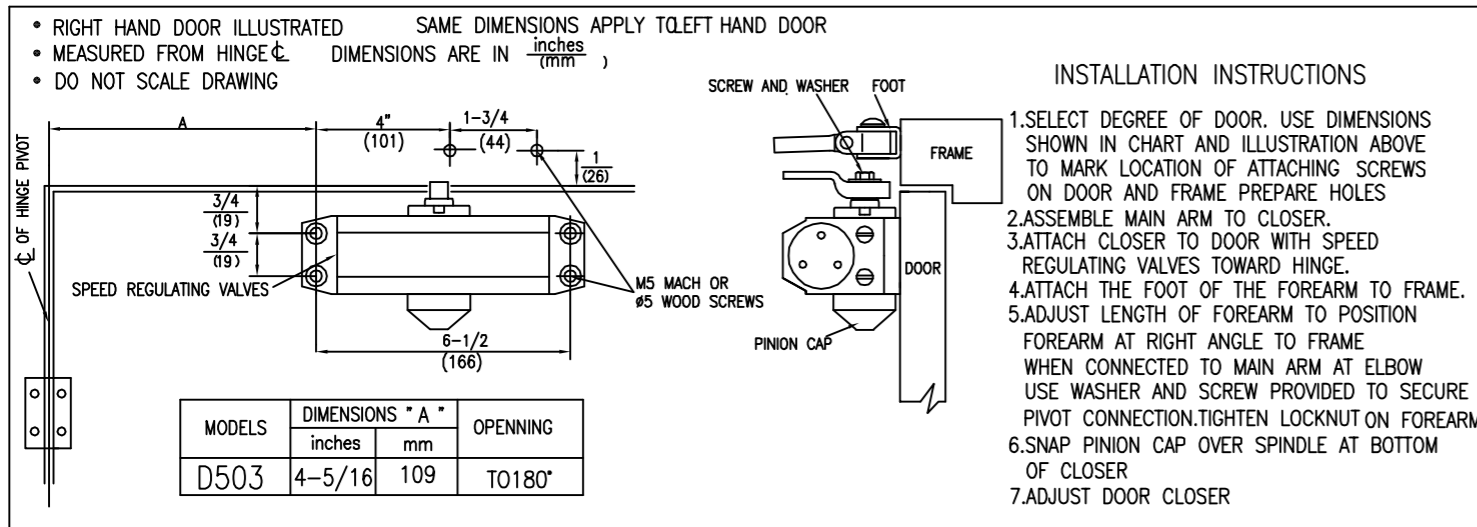
■ CHART TO DETERMINE HAND OF DOOR



■ FINAL ADJUSTMENT AND REGULATING PROCEDURES

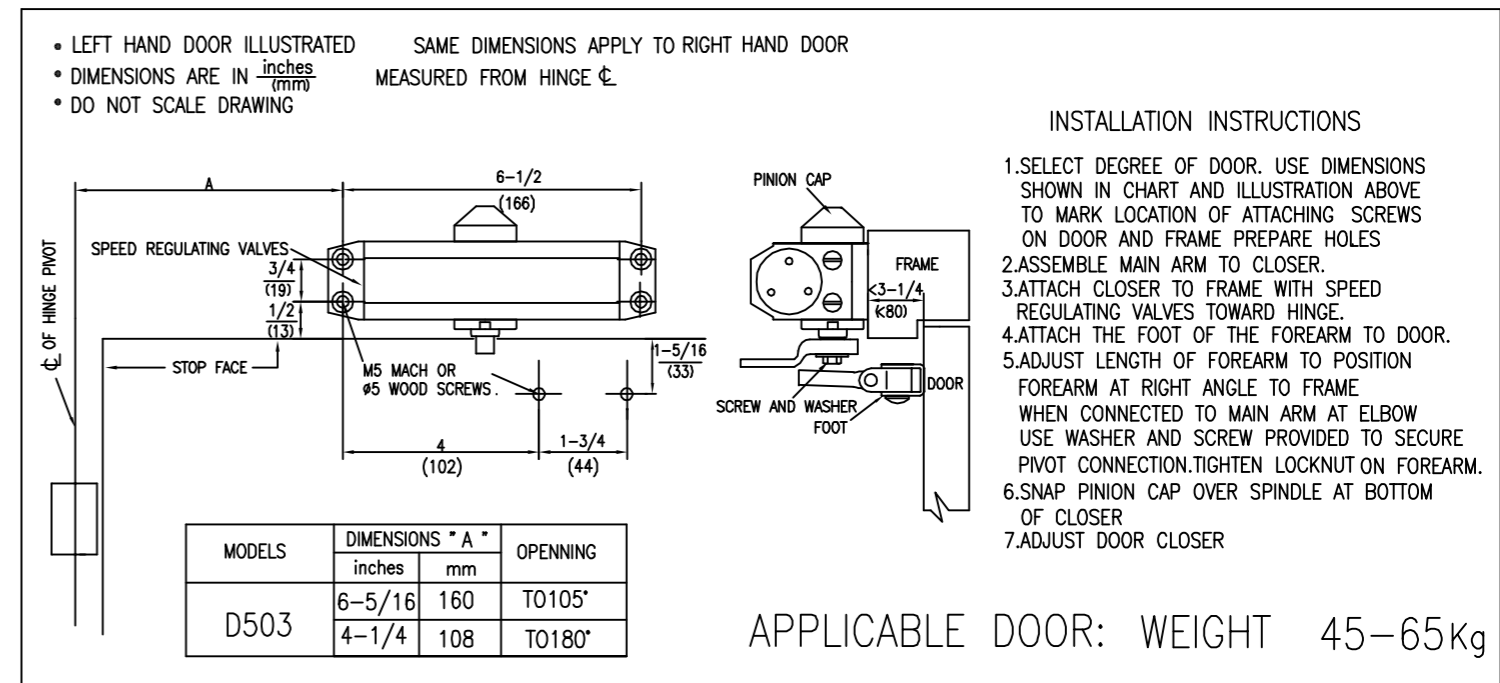


■ STANDARD INSTALLATION : PULL SIDE MOUNT



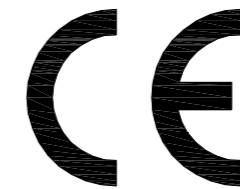
- INSTALLATION INSTRUCTIONS**
- 1.SELECT DEGREE OF DOOR. USE DIMENSIONS SHOWN IN CHART AND ILLUSTRATION ABOVE TO MARK LOCATION OF ATTACHING SCREWS ON DOOR AND FRAME PREPARE HOLES
 - 2.ASSEMBLE MAIN ARM TO CLOSER.
 - 3.ATTACH CLOSER TO DOOR WITH SPEED REGULATING VALVES TOWARD HINGE.
 - 4.ATTACH THE FOOT OF THE FOREARM TO FRAME.
 - 5.ADJUST LENGTH OF FOREARM TO POSITION FOREARM AT RIGHT ANGLE TO FRAME WHEN CONNECTED TO MAIN ARM AT ELBOW USE WASHER AND SCREW PROVIDED TO SECURE PIVOT CONNECTION.TIGHTEN LOCKNUT ON FOREARM.
 - 6.SNAP PINION CAP OVER SPINDLE AT BOTTOM OF CLOSER
 - 7.ADJUST DOOR CLOSER

■ TOP JAMB INSTALLATION: PUSH SIDE MOUNT



- INSTALLATION INSTRUCTIONS**
- 1.SELECT DEGREE OF DOOR. USE DIMENSIONS SHOWN IN CHART AND ILLUSTRATION ABOVE TO MARK LOCATION OF ATTACHING SCREWS ON DOOR AND FRAME PREPARE HOLES
 - 2.ASSEMBLE MAIN ARM TO CLOSER.
 - 3.ATTACH CLOSER TO FRAME WITH SPEED REGULATING VALVES TOWARD HINGE.
 - 4.ATTACH THE FOOT OF THE FOREARM TO DOOR.
 - 5.ADJUST LENGTH OF FOREARM TO POSITION FOREARM AT RIGHT ANGLE TO FRAME WHEN CONNECTED TO MAIN ARM AT ELBOW USE WASHER AND SCREW PROVIDED TO SECURE PIVOT CONNECTION.TIGHTEN LOCKNUT ON FOREARM.
 - 6.SNAP PINION CAP OVER SPINDLE AT BOTTOM OF CLOSER
 - 7.ADJUST DOOR CLOSER

APPLICABLE DOOR: WEIGHT 45-65Kg



16
Zhejiang Dorrenhaus Hardware Industry CO.LTD
No. 350, Guilan Road, Qiaodun Town, Cangnan
325806-Wenzhou,Zhejiang, China

D503
LE/DoP-Nr.: Dorrenhaus-CE-D503-1

EN 1154:1996 + A1:2002
-12 + AC: 2006 - 06
Controlled door closing devices
for doors

Self closing fulfilled
durability of self closing fulfilled
(500.000 cycles)

Performance assessed and classification reports
by ift Rosenheim NB-Nr.0757

Category of use	Number of test cycles	Test door mass/size	Fire behavior	Safety	Corrosion resistance
4	8	3	1	1	3

For the Declaration of Performance please visit our webpage: WWW.dorrenhaus.com/ce